

Arco Qld Pty Ltd
PO Box 6340 Yatala Qld 4207
Phone +61 7 3807 5364
Fax +61 7 3382 7929

INSTALLATION PROCEDURE & MAINTENANCE



ARCOFOLD – ARCOSTACK DOOR

ARCOFOLD - ARCOSTACK Doors are designed to ease the problem in opening and closing the door. With a push of a hand, the door will travel down to the pocket.



- Installation of ARCOFOLD - ARCOSTACK Door should only be undertaken by experienced Installer/Technician.
- Never allow anybody to be in close proximity when installing this door.
- Before commencing installation, ensure that the structure is suitable to carry the load of the door during operation. Consult the Structural Engineer/Builder of the project.

TOOLS REQUIRED

- Steel Tape
- Spirit Level
- Screw Drivers
- Drill Gun
- Drill Bits 5mm, 19mm, 23mm
- Ladder

PERSONAL PROTECTIVE EQUIPMENT

- Eye protection
- Hand Gloves
- Safety Shoes
- High Visibility Clothing
- Hard Hat

PACKING LIST

- Floor Socket (Fig.5)
-
- Aluminium Joiner Pins (to join Top Track)
-
- Top Track
- Door Panels (Lockset with Keys built in)

STEP 1 : MEASUREMENTS/CHECKLISTS

- Measure the height in random distance (Fig.1)
- Always refer from Top of Track to the Finish Floor Line (Fig.1)
- Use the “smallest measurement” that you will get.
- Measure the “Daylight Width” (Fig.1)
- Ensure that the ceiling is horizontally level.
- Check the “Packing Lists”

STEP 2 : INSTALLATION

- Install the Top Track partly (Fig.2)
- Leave at least 1.0 meter to slide the panels in/out (Fig.3)?????
- When all panels are in the Track, insert the Joiner Pin & Roll Pins to join and complete the door width where the door has to travel (Fig.4)
- Drill a hole on the floor where the Drop Bolt is inline (Floor Socket in place).
- Drill a hole on the Top Track where the Locking is inline.

STEP 3 : TESTING

Caution : Do not push/pull the door too hard. Hold the middle panel and push/pull slowly.

- When opening, unlock the key.
- When closing, Slide the grip down into the floor socket (Fig.6), slide the grip up to lock the pin into the top track (Fig.7)

MAINTENANCE

- Regularly clean the Glass infill with cloth and water.
-
- Regularly check for foreign materials build up on the tracks.

NOTE

For Orders, please use the lay-out sheet, input all the details.

SUPPORT DRAWINGS

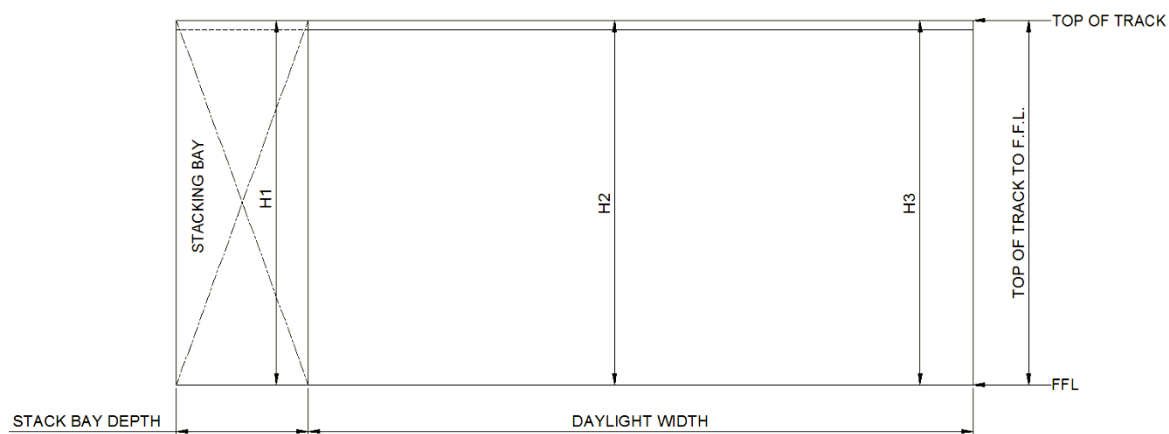


Figure 1

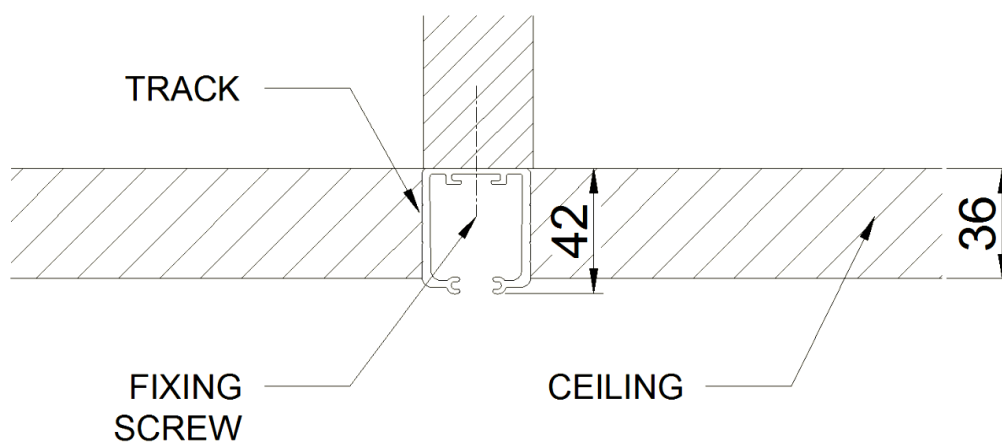


Figure 2

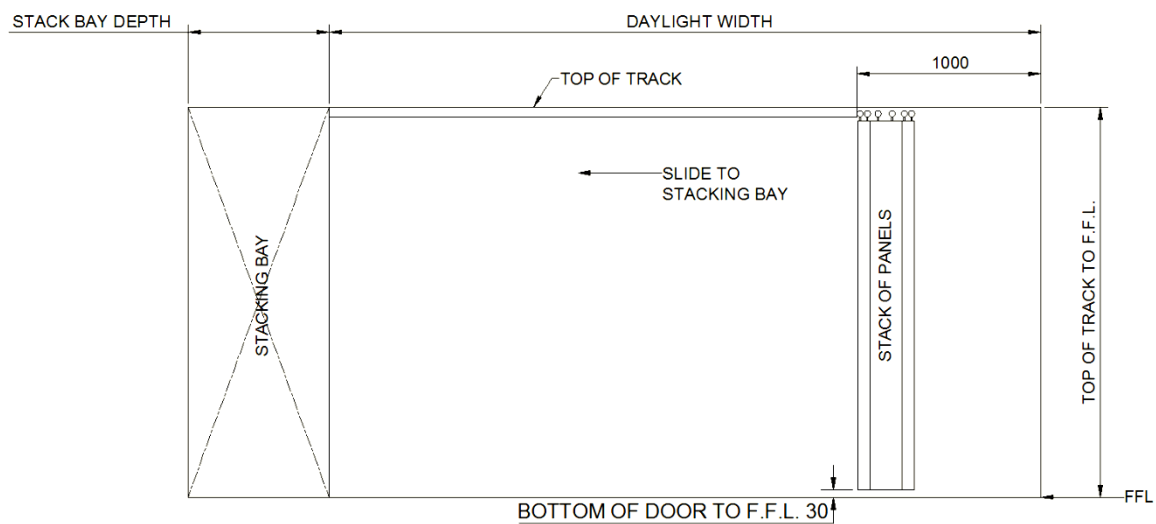


Figure 3

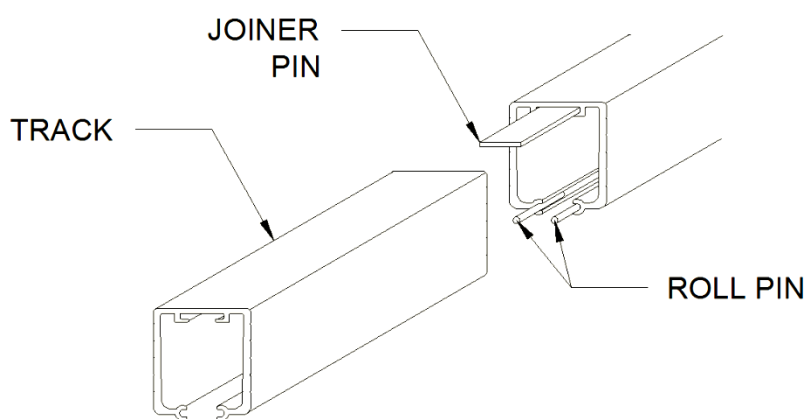


Figure 4

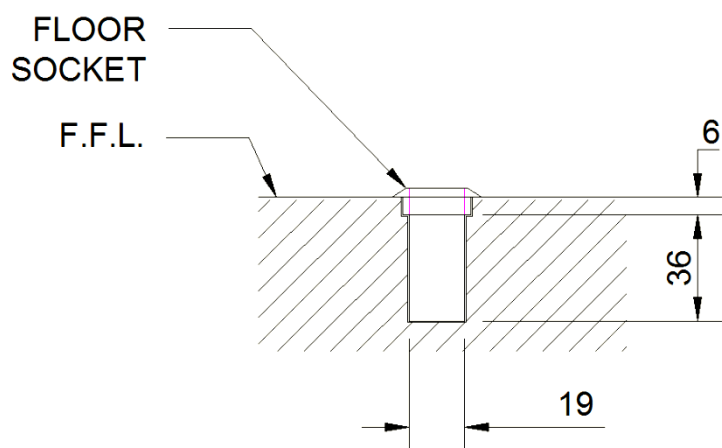
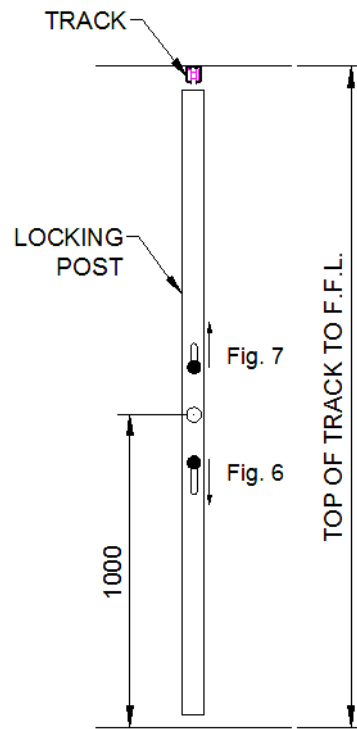
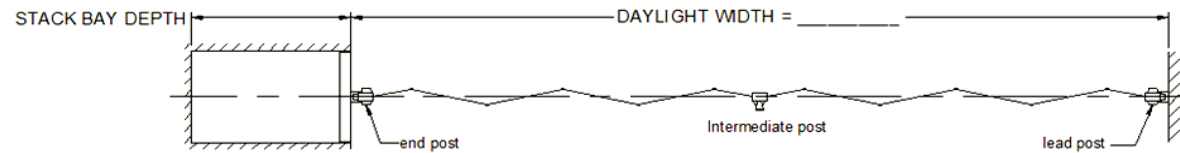


Figure 5

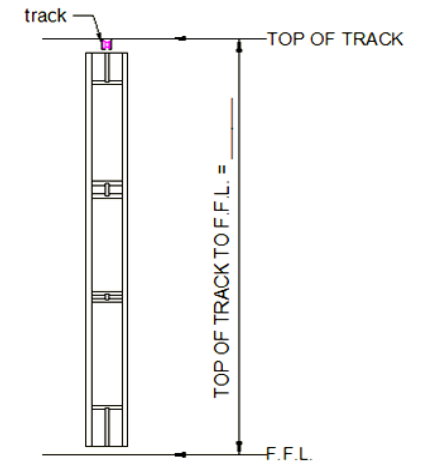
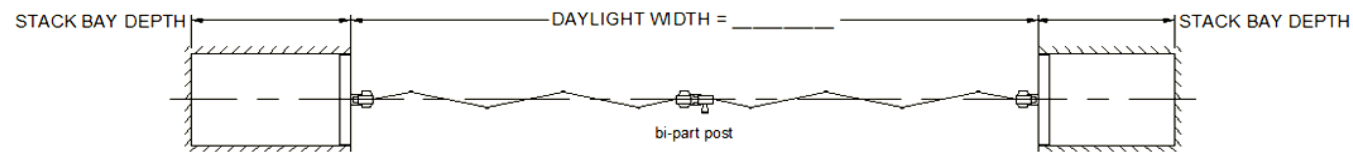


LAY OUT SHEET

☐ SINGLE - single stack w/ wall channel on pocket door



☐ BI PARTING - double stack w/ wall channel on pocket door



TYPE

☐ 150mm Wide ☐ 300mm Wide

INFILL

☐ Polycarbonate Infill ☐ Perforated Aluminium

COLOUR

☐ Clear Anodise ☐ Powder Coat (Standard Colourbond Range)

LOCK SIDE

☐ Inside Only ☐ Outside Only ☐ Rear Snib

LOCKSET TYPE

☐ Top & Bottom Locking ☐ Hook lock

KEY OPERATION

☐ Key Alike

DELIVERY ADDRESS
